

Construction Weekly Update

Week of August 17th, 2020

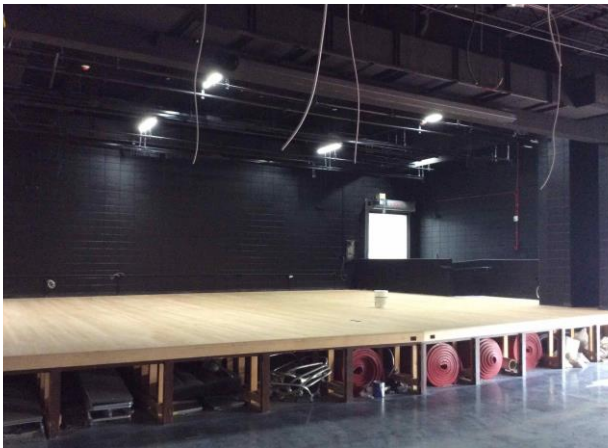
School District of Manawa



Band Room



Main Office/Reception



Stage



Commons

Update

The stage floor was sanded and polished concrete in various spaces around the school was completed. Carpet began to be installed in the Middle School collaboration. Coiling door was installed between the band room and the stage. Curtains were installed in the commons. Ceiling grid and tiles were installed in various areas and continues to make progress. Bathroom partitions, grab bars, and fire extinguishers around the building were installed. Metals lab equipment was set up. Reception/main office furniture arrived and was set up. Finishes continue to make progress.

About Hoffman

Hoffman Planning, Design & Construction, Inc. is an integrated Total Project Management firm based in Appleton, Wisconsin. We partner with our clients to create innovative designs and build high quality, functional, attractive, energy efficient facilities at costs at or below projects delivered using traditional design and construction methods. Currently in our fifth generation of leadership, Hoffman continues to deliver the same expert service and superior value our clients have come to appreciate.